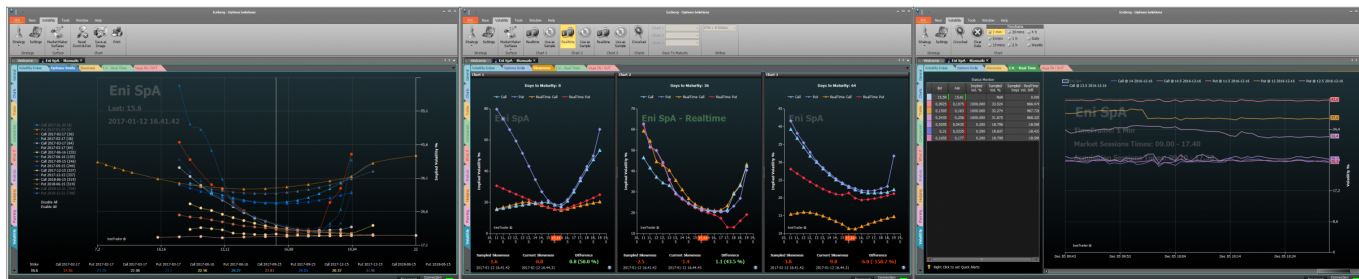


Strategy - Volatility

This section of the strategy gives the chance to study the implied volatility of the options. It is composed of three parts: Volatility Index, Skew & Surfaces, Implied Volatility RealTime and eventually Vega IN / OUT.



Video Tutorial

	24/03/2016	Volatility - Cos'è la volatilità e lo smile - Didattico	13:27	
	24/03/2016	Volatility - Cos'è la superficie di volatilità - Didattico	13:58	
	13/10/2016	Volatility - Volatility Index - Difference	7:16	
	13/10/2016	Volatility - Volatility Index - Oscillator	7:19	
	13/10/2016	Volatility - Skew & Surfaces	14:01	
	13/10/2016	Volatility - Implied Volatility Real-Time	6:18	
	19/05/2016	Volatility - Volatility - Come individuare il Trend [Parte 1]	14:35	
	19/05/2016	Volatility - Volatility - Come individuare il Trend [Parte 2]	17:03	
	29/11/2016	Volatility - Stima della volatilità implicita	13:22	
	02/12/2016	Volatility - Comparazione Implied Volatility	8:43	
	24/03/2016	Volatility Index Comparison	10:25	

Click [here](#) to see other **Video di Iceberg**

Il menù

Strategy

	it open the submenu Strategy
	it creates a new Strategy




 <p>Open Strategy</p>	<p>it allows you to open a previously saved Strategy</p>
 <p>Save Strategy</p>	<p>it allows you to save the Strategy currently in use</p>
 <p>Settings</p>	<p>it open the window Strategy Settings for the strategy settings</p>

Chart 1






 <p>RealTime</p>	<p>it enable the receiving of realtime data for Chart 1, The real time is allowed for only one chart at a time</p>
 <p>Use as Sample</p>	<p>it set the real time curve as sample. This allow to study the changing of the curve in relation to the sampled</p>

Chart 2

 <p>RealTime</p>	<p>it enable the receiving of realtime data for Chart 2, The real time is allowed for only one chart at a time</p>
 <p>Use as Sample</p>	<p>it set the real time curve as sample. This allow to study the changing of the curve in relation to the sampled</p>

Charts

 <p>Cross Hair</p>	<p>it enable or disable the Crosshair in Chart 1 and Chart 2</p>
-------------------------------------------------------------------------------------------------------	------------------------------------------------------------------





Days To Maturity

<p>Chart 1</p>	<p>ot allows you to select the number of days to maturity of Chart 1</p>
<p>Chart 2</p>	<p>ot allows you to select the number of days to maturity of Chart 2</p>

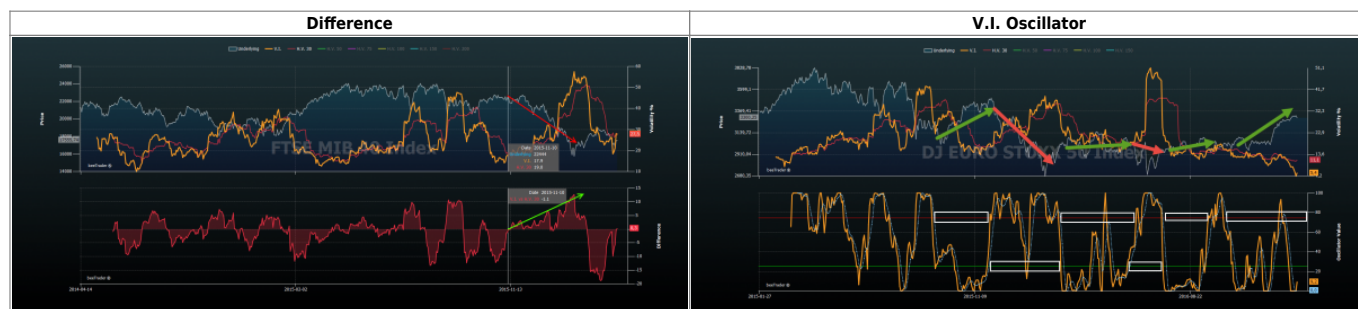
Strikes

Strikes

Surfaces

Market Maker Surfaces	ot allows you to acquire the market volatility surface, open a saved or saved the current one. For more information on Market Maker Surfaces , Click qui
 <p>Rotate</p>	once activated by pressing and holding the left mouse button you can rotate the surface by moving the mouse
 <p>Zoom</p>	once activated by pressing and holding the left mouse button you can zoom into the surface by moving the mouse
 <p>Pan</p>	once activated by pressing and holding the left mouse button you can move the surface by moving the mouse
 <p>Reset Zoom & Pan</p>	it reset all graphical changes and return to the initial view

Volatility Index



The known Volatility index inform when volatility goes up or down, conversely the volatility index built in Iceberg show whether is priced an up trend or a down trend!

This is more and more useful than the standard index!

For example if we put the crosshair on 10/11/2015, the index price a probably down trend. After we see that it happen!

If the index is above the zero it prices a down trend while the index is below the zero it prices an uptrend. The Iceberg's volatility index is an interpolation of implied volatility but it are not the midpoint of weighted volatility. It is different from VIX or VDAX o VSTOXX. It reflect the trend priced by Market Maker

For example during fall in volatility, the index can rise, this is due to the fact that the “conviction” of an uptrend is decreasing

The value expressed by classic index can be obtained through the mean of the implied volatility of the three option “approximately” ATM measured on 30 days.

If the underlying is at 103 and the strikes have step 5 you take the implied of : 100, 105, 110 If the underlying is at 102 and the strikes have step 5 you take the implied of : 95, 100, 105

The Volatility Index in Iceberg is unique and it is under patent request.

Difference

Iceberg compares the historical volatility and the implied volatility calculated by the system [Market Maker Surfaces](#). This difference is shown on the lower graph.

Every volatility can be selected or deselected by clicking on the name at the top.

The chart below is designed for comparing different historical volatility. When you click the Difference button the next menu is enabled which allows you to choose which historical volatility comparison with those seen in the top graph.



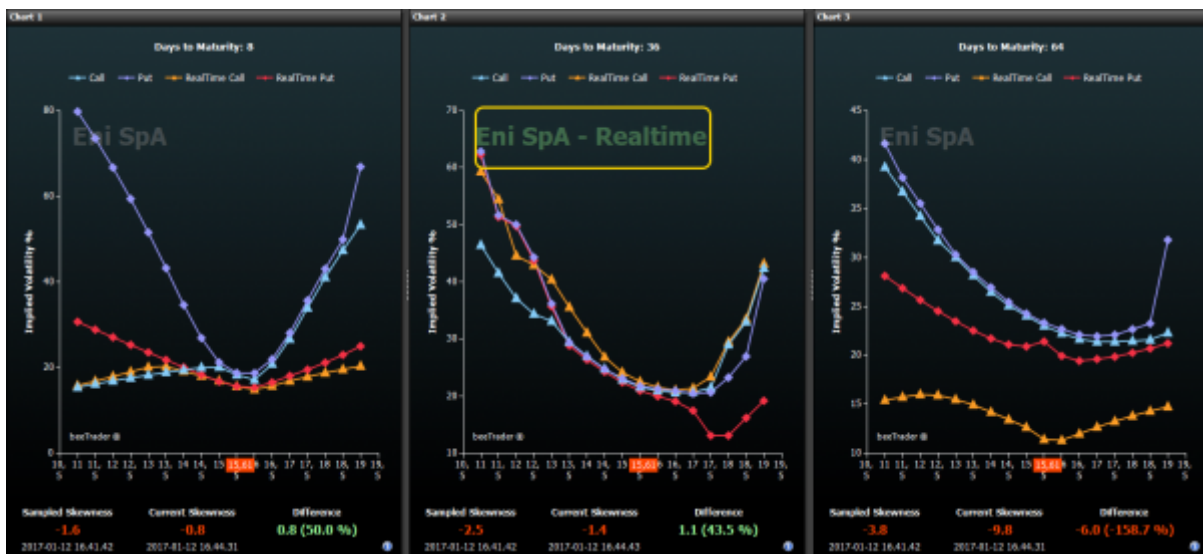
In the above example shows the difference between the historical volatility at 30 days (selected in the menu Reference to Compare) with the historical volatility at 75 days displayed in the top graph.

V.I. Oscillator

The Volatility Index can also be displayed as an oscillator, this type of display makes it easier to read and therefore decide if it is high or low volatility.



Skew & Surfaces



“Skew & Surfaces” shows the volatility skew of the surface stored for the underlying. If there is no curve the skews are flat and you need to acquire a surface with the tool [Market Maker Surfaces](#) accessible from the tab [General](#).

There are four graph: Chart 1, Chart 2, Call Surface e Put Surface.

- Chart 1: In this section is present the volatility skew of the expiry selected in Days to Maturity (Chart 1) for Call and Put. You can activate the realtime so you can compare the volatility of put and call stored with those present in real-time. The real time is allowed for only one chart at a time;
- Chart 2: In this section is present the volatility skew of the expiry selected in Days to Maturity (Chart 2) for Call and Put. You can activate the realtime so you can compare the volatility of put

and call stored with those present in real-time. The real time is allowed for only one chart at a time;

- Call Surfaces: It shows the volatility surface of the calls actually in use. From this surface are extrapolated skews present in section Realtime and Comparison;
- Put Surfaces: It shows the volatility surface of the puts actually in use. From this surface are extrapolated skews present in section Realtime and Comparison;

The area below the graphs Chart 1 and Chart 2 is devoted to a comparison between the stored and current skewness.

The skewness has always a negative slope because the market price higher a down trend than an up trend.

So we can say that an higher negative slope suggests a down trend while a less negative slope suggests a up trend .

Therefore it is an excellent tool to forecast the very short-term trend indeed the slope anticipates the movement of the underlying as it is determined by market makers.

In general, the skewness should never be positive and the volatility values that make up the smile of the Call must be lower than the smile of Puts. If there are no such conditions then it means we are doing an analysis in special conditions that will line up in a few minutes so we expect that the MM will reset their curves.

There are exception: all volatility indices and the commodities. For those instruments the reading is conversely because they can't reach to zero. The skewness in these securities must not be negative and the volatility values that make up the smile of the call must be higher than the smile of the put.

Utilization

Below the values of Current Skewness and Sampled Skewness there are the time references while in the menu there are commands to select the expires to be displayed and which of these put in real time and compare. You can assess the "Difference" in order to detect the short-term trend as explained above

- Acquire the surface



- Choose expires



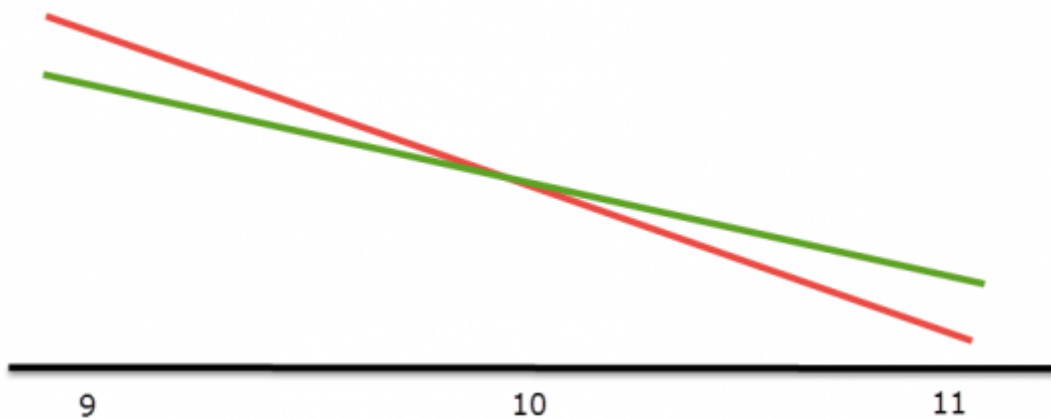
- Enable real time



Note: The comparisons can be made importing volatility surfaces saved months before or you can compare very close slopes to check the movement of the underlying in the short term.

Use in pills

- First we take vision of the current trend
- After we take a sample and we will have a value of slope.
- Then we carry out a second sampling after few hours and we could have three results:
 - Same slope: il significato è che il trend continua nella stessa direzione senza tanta velocità.
 - More negative slope: the market has increased the speed of the short trend or decreased the speed of the long one
 - Less negative slope: the market has decreased the speed of the short trend or increased the speed of the long one



La linea nera rappresenta la base grafica dove esprimiamo dei valori crescenti (da 10 a 11) o calanti (da 10 a 9) di un sottostante teorico.

La linea Rossa supponiamo che tocchi idealmente le tre volatilità espresse ai tre strike 9, 10 e 11. Vediamo che è inclinata verso il valore 11 e vediamo che ha una inclinazione negativa.

La linea Verde supponiamo che sia una seconda lettura, a distanza di tot tempo. Vediamo che la sua inclinazione è minore.

Implied Volatility - RealTime



This graph shows the implied volatility of the legs present in the Strategy and the underlying. Each legs is represented with the same color associated with it in the strategy. The user can enable or disable the display of the legs by clicking on the name of the same at the top.

There some function available: the selection of the timeframe, the possibility to delete the history and start ex-novo with data visualization and the possibility to set a Quick Alert just clicking the right mouse button on the cell of interest.

When the strategy is open all data received of each leg are stored. Doing this every user can create a history of the implied volatility of the options that are dealing with.

Vega IN / OUT



This tool, given exclusive to the participants of the presentation of Iceberg has been designed and developed to take advantage of volatility retracements from peaks identified by [Volatility Index](#). In the literature we read that we have to sell when the volatility is high and buy when it is low. But this information can cause losses. In fact, the volatility must be sold when it is falling and bought when it is going up. It may seem a small difference, but it is substantial. This is shown by the tool Vega IN / OUT!

For example, you can sell a straddle when the volatility index cross from top to bottom the line 2. You have to sell Calls e Puts on a long expire (1,5 - 2 years) with a low delta, around 0.2. Doing this the figure will be less affected by the movements of the underlying and it will gain from the lowering of vega.

In case the underlying has a wide excursion you have to rebalance the Delta by selling another options (Call or Put depends on the direction).

For example you can rebalance when the ratio between the loss of one leg and the gain of the other one is equal to two.

Utilization Example



In the image we see how Iceberg can be used for trade the options with its own Book, in which you can see the trend tick by tick of the underlying e and the implied volatility of the option (Vega).

From:

http://manuals.playoptions.it/Iceberg_old/ - **Iceberg Options Solutions**

Permanent link:

http://manuals.playoptions.it/Iceberg_old/en/volatility?rev=1482260938



Last update: **2016/12/20 20:08**