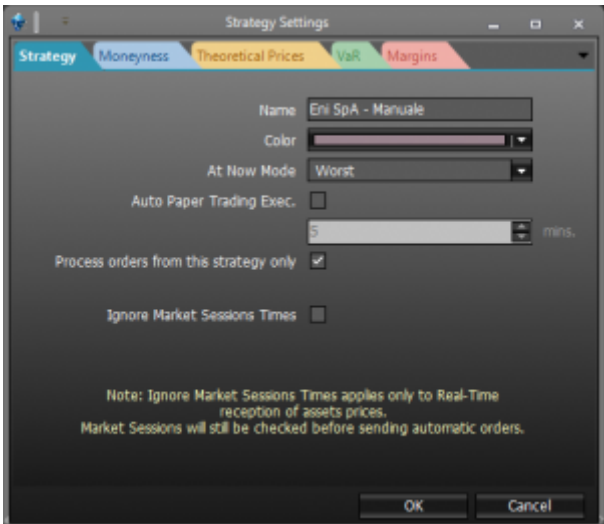


Strategy Settings

In this window is possible to modify the general settings of the strategy. The window “Strategy Settings” is divided in three section: Strategy, Ticks e Margins.

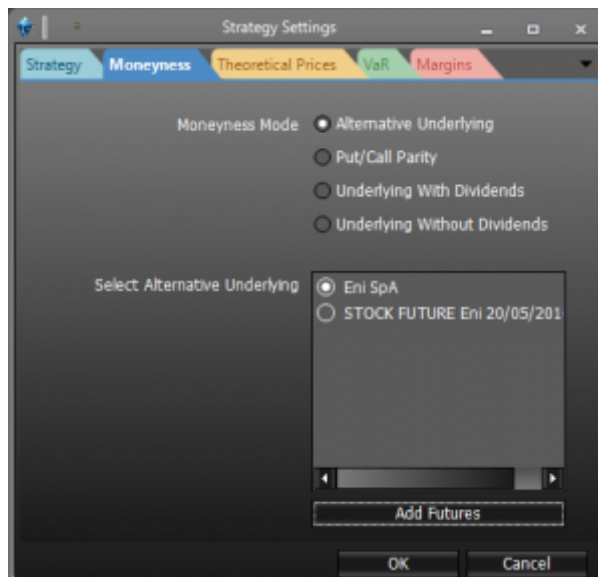
Strategy



In this sectin is possible to modify the name and the color of the strategy. The color of the strategy is used to identify it in the [Portfolio](#). Every strategy have the edge with its color.

Ignore Market Session Times	It allows you to exclude the filter of market session set in Symbol Manager . Every stock exchange has its own trading hours. By enabling this command the system will exclude the filter of times and you will receive realtime prices also outside the trading hours set. By default this setting is enabled
-----------------------------	--

Moneyness



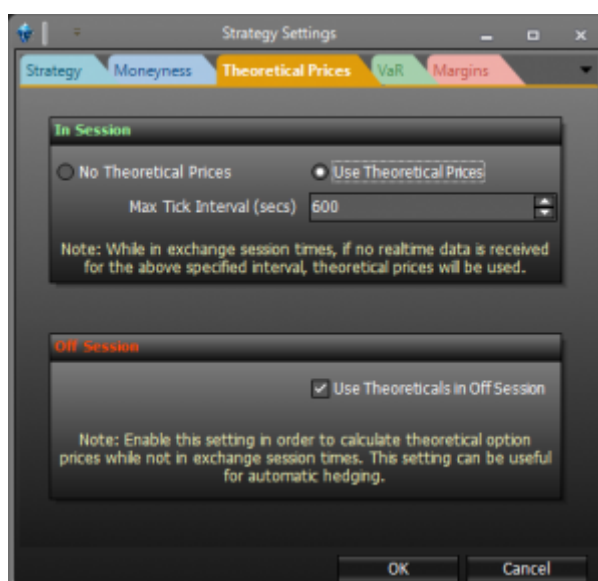
In this section is possible to choose the mode whereby Iceberg will calculate the Moneyess of the options .

The following calculation methods are available:

- Alternative Underlying: Another underlying can be used, among those included in the Strategy, for example a futures;
- Put/Call Parity: For each deadline is calculated the value of the underlying through the [Put/Call Parity](#). You only need to set the necessary deadlines and the Risk Free Rate;
- Underlying with Dividends: the price of the underlying is adjusted according to [dividends](#) entered by the user in [Symbol Manager](#);
- Underlying without Dividends: It uses the underlying ignoring any dividends.

For more information on [Moneyess and Dividends](#) Please read the appropriate section of the manual [link](#)

Theoretical Prices



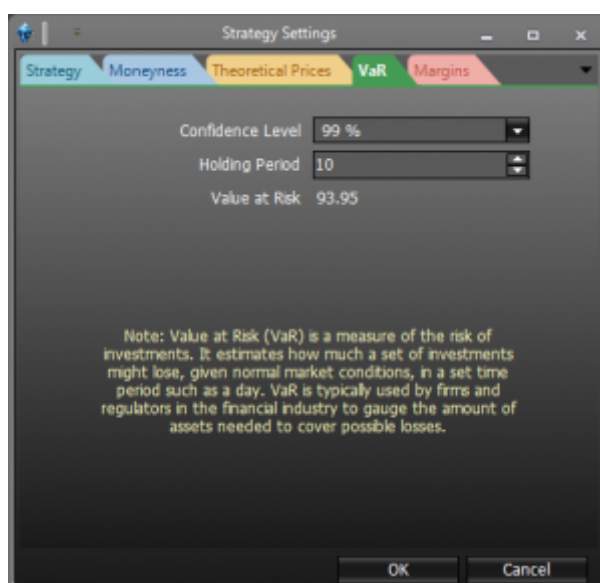
In this section the user can set the use of the theoretical price. Theoretical prices are calculated from

Iceberg, based on the acquired volatility curves. Please read the appropriate section of the manual [link](#).

In Session: it set how many second must elapse before the theoretical price take place of the present price ;

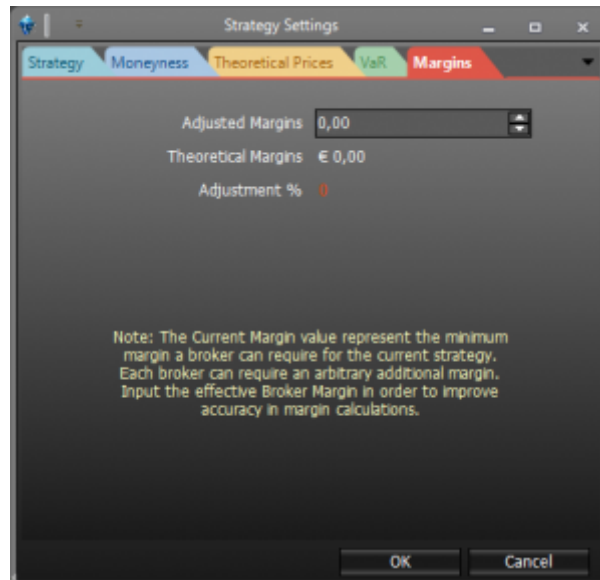
Off Session: it set up and use the theoretical prices outside of the underlying market session set in [Symbol Manager](#).

VaR



In this section it is possible to set the parameters for the calculation of [Value At Risk](#). This value is also used in the [Portfolio](#).

Margins



In this section it is possible to align the margin calculated by Iceberg with those actually required by the broker. The margin calculated by Iceberg is that required by clearing house. The broker charges an additional percentage of margin to the user . Once the strategy is saved the user imputed value is also transferred to [Portfolio](#).

From:

http://manuals.playoptions.it/Iceberg_old/ - **Iceberg Options Solutions**

Permanent link:

http://manuals.playoptions.it/Iceberg_old/en/strategy_settings?rev=1472050425



Last update: **2016/08/24 16:53**