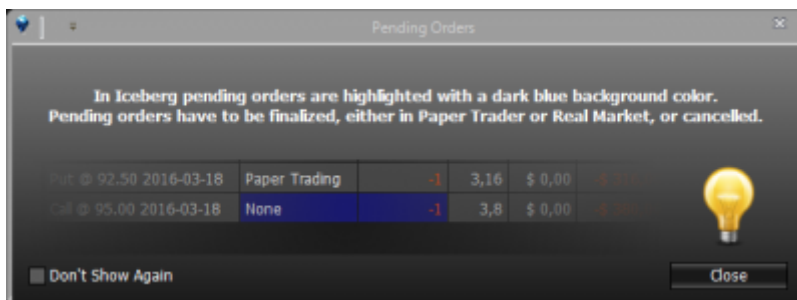


# Paper Trading & Real Market

In this chapter we will illustrate how orders are managed in Iceberg. A single strategy can contains both real-market and paper-trading orders. There are essentially two type of order: Paper Trading e and Real Market. The orders which are not already executed(in basket) they are highlighted in blue both in the section [Trades](#) and [Legs](#). The type of order are defined by "Filled Type".

When an order is in the basket,highlighted in blue, The message below will appear to remind you to finalize the order.



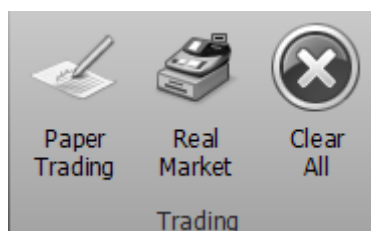
## Video Tutorial

	24/03/2016	<a href="#">Trading real market con Webank</a>	3:53
--	------------	--	------

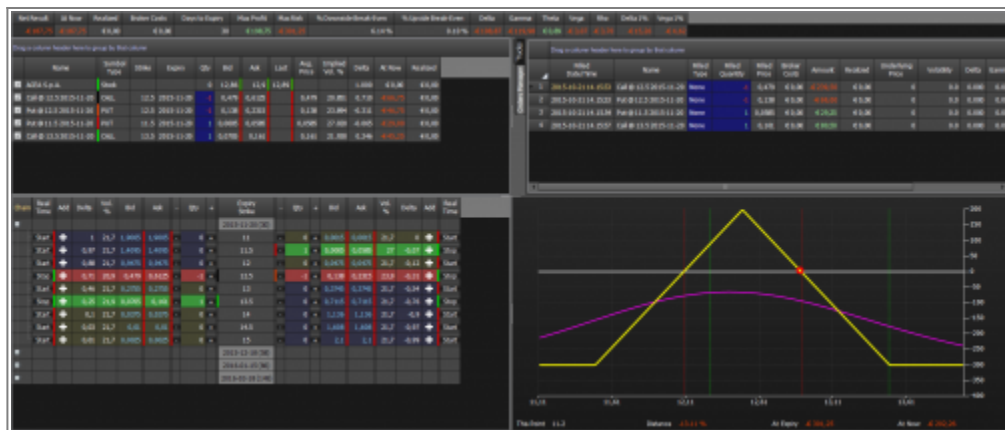
Click [here](#) to watch others **Iceberg Video**

## Orders from Chain Opzioni

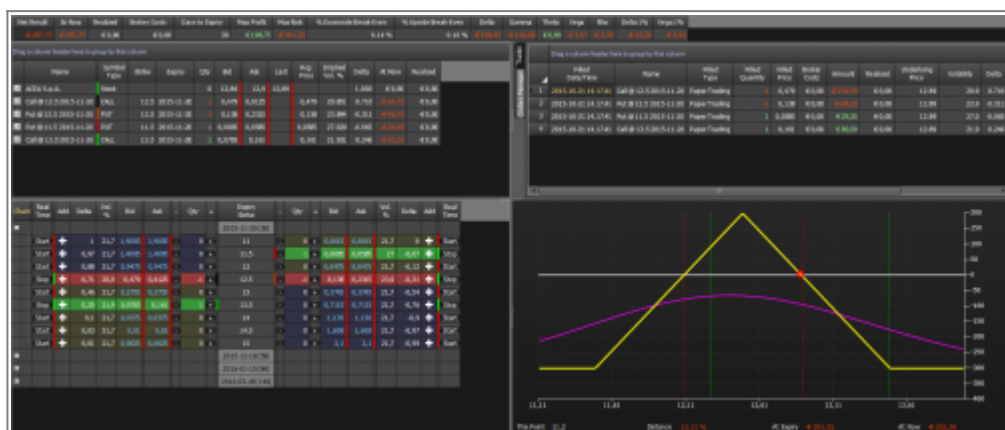
In order to finalize the orders creates by using the option chain you use the buttons in the menu .



1. You select the options to execute. Inn the tab Legs and Trades the quantity highlighted in blue inform that the order have to be finalize



2. If you finalize in Paper Trading, it simulates the execution at peyorative price and the orders are archived in Trades with Filled Type = Paper Trading



3. If you finalize in Real Market, the book of the orders will be opened. The field "Target Q.ty" show the quantity that have to be executed. Once every order is executed they are recorded in Trades with Filled Type = Real Market



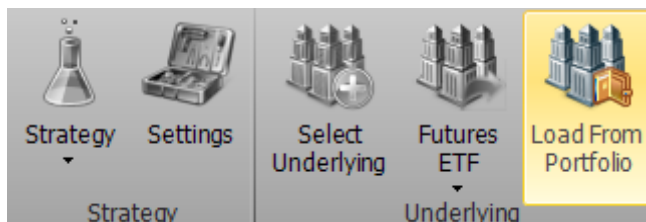
### Order transformation from Paper Trading to Real Market

When a order is registered in Trades with Filled Type = Paper Trading you can change the Filled Type in Real Market by clicking on the cell and changing the words

Drag a column header here to group by that column													
	Filled Date/Time	Name	Filled Type	Filled Quantity	Filled Price	Broker Costs	Amount	Realized	Underlying Price	Volatility	Delta		
1	2015-10-21 14.38.16	Call @ 12.5 2015-11-20	PaperTrad	<input checked="" type="checkbox"/>	Paper Trading	55	€ 0,00	-€ 242,75	€ 0,00	12.9	20.5	0.717	
2	2015-10-21 14.38.16	Put @ 12.5 2015-11-20	PaperTrad	<input checked="" type="checkbox"/>	Real Market	75	€ 0,00	-€ 68,75	€ 0,00	12.9	24.0	-0.308	
3	2015-10-21 14.38.16	Call @ 13.5 2015-11-20	PaperTrading	<input type="checkbox"/>		1	0,161	€ 0,00	€ 80,50	€ 0,00	12.9	21.8	0.249
4	2015-10-21 14.38.16	Put @ 11.5 2015-11-20	PaperTrading	<input type="checkbox"/>		1	0,0575	€ 0,00	€ 28,75	€ 0,00	12.9	27.1	-0.064

## Orders loaded from broker's portfolio

When orders are loaded from the broker's portfolio they are always recorded as Real Market.



From:

[http://manuals.playoptions.it/Iceberg\\_old/](http://manuals.playoptions.it/Iceberg_old/) - **Iceberg Options Solutions**

Permanent link:

[http://manuals.playoptions.it/Iceberg\\_old/en/paper\\_real?rev=1472132612](http://manuals.playoptions.it/Iceberg_old/en/paper_real?rev=1472132612)



Last update: **2016/08/25 15:43**