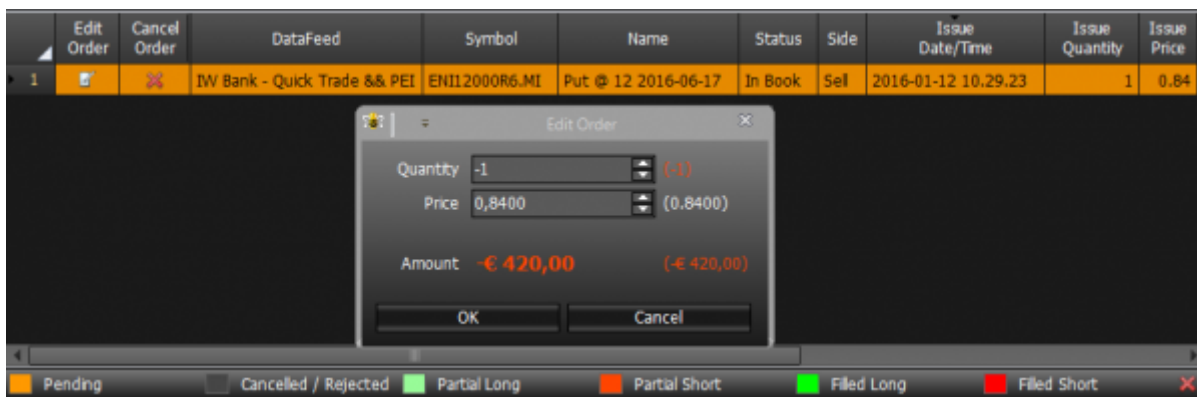


# Strategy - Order Manager

In Order Manager are present all orders sent in Real Market, They are highlighted in relation to their status: Pendant, Cancelled or Rejected, Partially Executed (Long o Short), Executed (Long o Short). The Real-Market orders, Can be cancelled or modified. Whether you modify an order a pop-up with the original and modified quantity will appears, so the user can immediatly evaluate his modification .

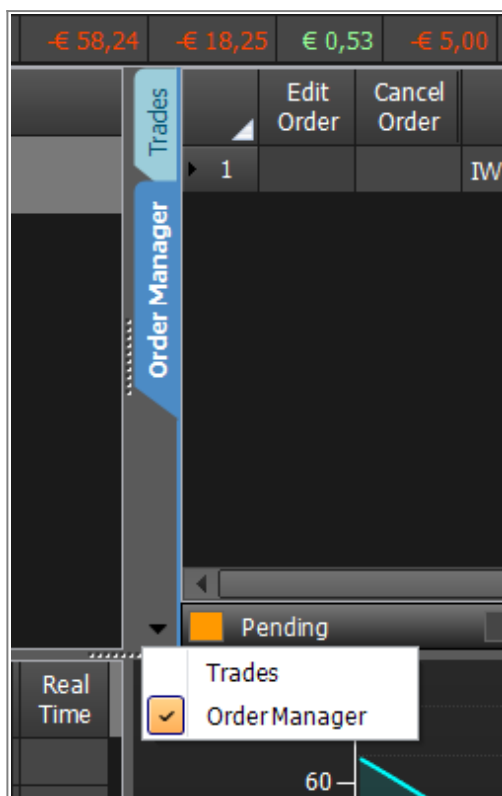


## Video Tutorial

24/03/2016 [Trading real market con Webank](#) 3:53

Click [qui](#) to watch other video [Video di Iceberg](#)

## Order Manager -> Trades



From the tab "Order Manager is possible to switch to "Trades tab"

From:

[http://manuals.playoptions.it/Iceberg\\_old/](http://manuals.playoptions.it/Iceberg_old/) - **Iceberg Options Solutions**

Permanent link:

[http://manuals.playoptions.it/Iceberg\\_old/en/order\\_manager?rev=1472628359](http://manuals.playoptions.it/Iceberg_old/en/order_manager?rev=1472628359)



Last update: **2016/08/31 09:25**