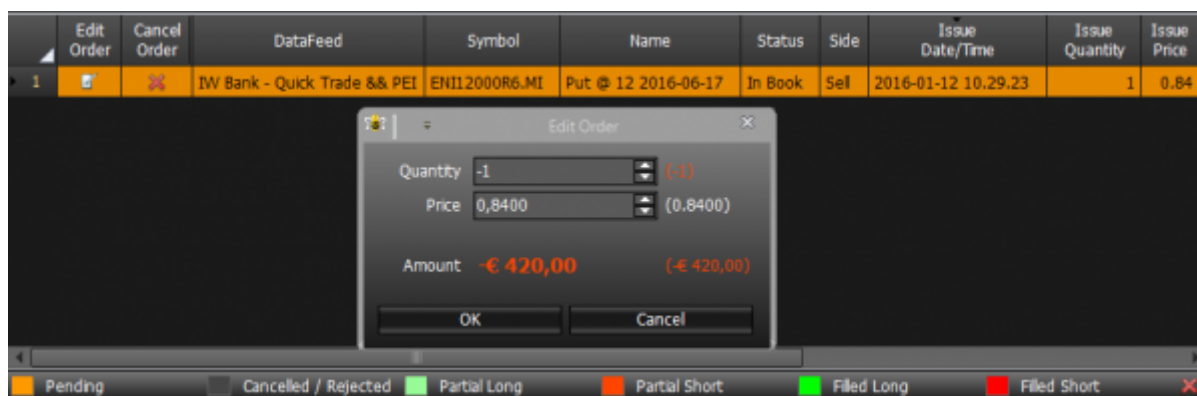


## Strategy - Order Manager

In Order Manager are present all orders sent in [Real Market](#), They are highlighted in relation to their status: Pending, Cancelled or Rejected, Partially Executed (Long o Short), Executed (Long o Short). The Real-Market orders, Can be cancelled or modified. Whether you modify an order a pop-up with the original and modified quantity will appears, so the user can immediatly evaluate his modification .

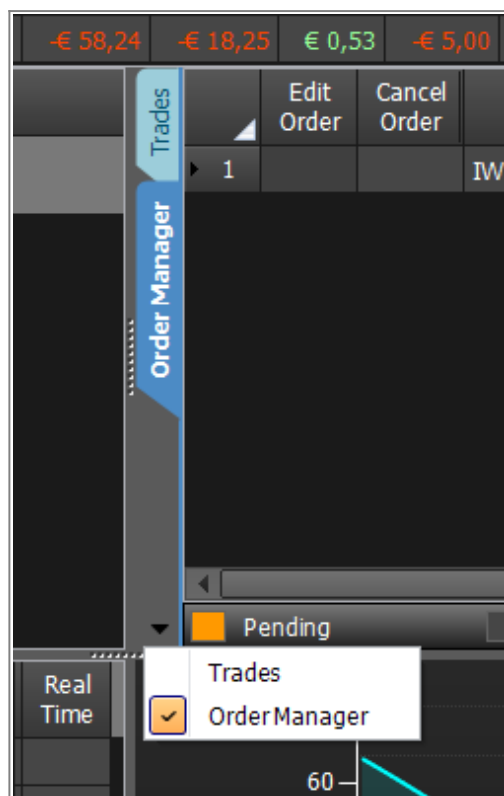


## Video Tutorial

	24/03/2016	<a href="#">Trading real market con Webank</a>	3:53
--	------------	--	------

Click [qui](#) to see other video [Video di Iceberg](#)

## Order Manager -> Trades



From the tab "Order Manager is possible to switch to "Trades tab"

—\

From:

[http://manuals.playoptions.it/Iceberg\\_old/](http://manuals.playoptions.it/Iceberg_old/) - **Iceberg Options Solutions**

Permanent link:

[http://manuals.playoptions.it/Iceberg\\_old/en/order\\_manager?rev=1471009260](http://manuals.playoptions.it/Iceberg_old/en/order_manager?rev=1471009260)



Last update: **2016/08/25 09:53**