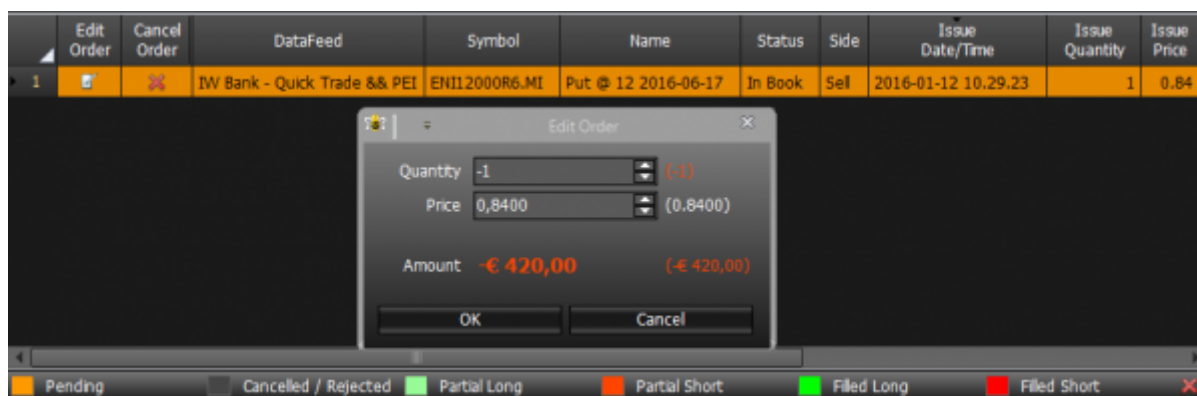


Strategy - Order Manager

In Order Manager are present all orders sent in [Real Market](#), They are highlighted in relation to their status: Pending, Cancelled or Rejected, Partially Executed (Long o Short), Executed (Long o Short). The Real-Market orders, Can be cancelled or modified. Whether you modify an order a pop-up with the original and modified quantity will appears, so the user can immediatly evaluate his modification .



Video Tutorial



Click [qui](#) to watch other video [Video di Iceberg](#)

From:
http://manuals.playoptions.it/Iceberg_old/ - **Iceberg Options Solutions**

Permanent link:
http://manuals.playoptions.it/Iceberg_old/en/order_manager

Last update: **2017/12/28 11:47**

