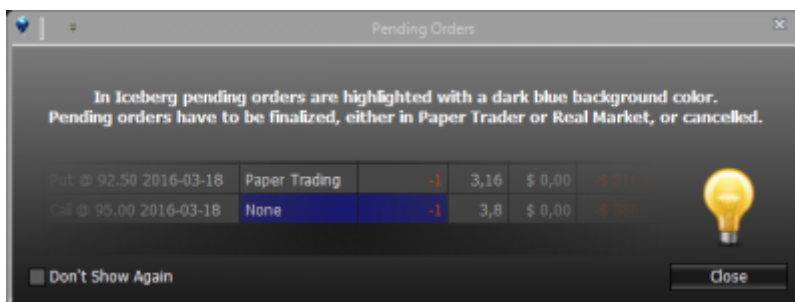


# Strategy - Legs

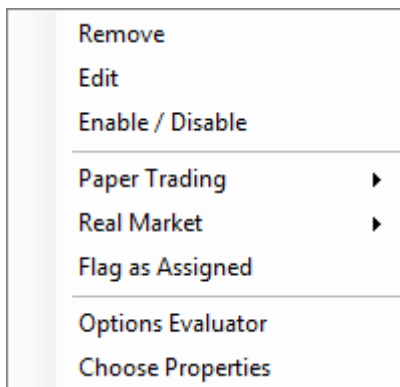
In this section you have every legs executed divided by underlying.

As you can see from the examples above the field “Quantity” is highlighted in blue. It remains blue until the orders are not finalized, in [Paper Trading](#) or in [Real Market](#).

When a order is not finalized a windows appears with message below

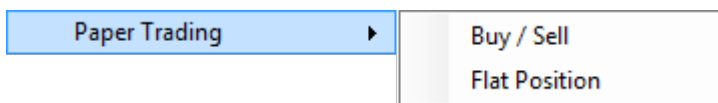


## Right click mouse menù for options

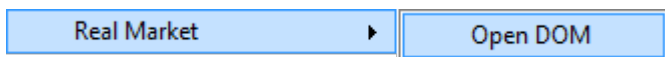


- Remove: it remove the selected symbol from the strategy and from trades with the eventual consolidated;
- Edit: it allows you to remove or modify the selected symbol throught [Edit Option](#);
- Enable/Disable: it enable or disable the selected symbol in the strategy, therefore the property of the strategy and the Payoff will change;
- Paper Trading: see the details of functions outlined further down on this page;
- Real Market: see the details of functions outlined further down on this page;
- Flag as Assigned / Exercise Options: it need for short options. It execute the “exercise” in [Paper Trading](#), it close the option at zero and buy/sell the underlying according to option type at strike price;

- Quick Alert: see the details of functions outlined further down on this page;
- Options Evaluator: it starts the [Options Evaluator](#), to evaluate the greeks of this options. For more informations, please read the [Options Evaluator](#) section:
- Choose Properties: it open the window "Choose Properties" to choose properties to visualize, in Chapter below the list of properties available;



- Paper Trading → Buy/Sell: it open the order window for the execution in [Paper Trading](#);
- Paper Trading → Flat Position: it close the position [Paper Trading](#) at market price;



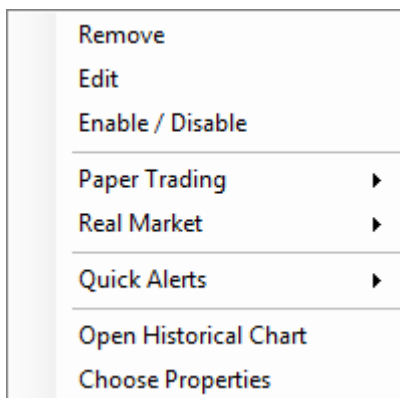
- Real Market → Open DOM: it open the book for the execution in Real Market. For an eventual modification is available the [Order Manager](#)



- Quick Alert → Add Quick Alert: it allows you to insert an Alert to a specific value of any symbol, the Alerts can be applied on Bid, Ask, Last, Profit/Loss, Volatility, Delta, Gamma, Theta, Vega, Rho, Time Value;
- Quick Alert → Show Quick Alert List: it shows the summary screen of active Quick Alert in the strategy;

For a list of available Properties and their explanation, click [here](#).

## Right click mouse menù for underlying or futures

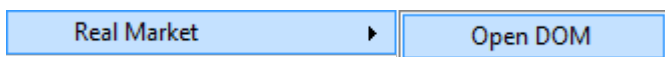


- Remove: it remove the selected symbol from the strategy and from trades with the eventual consolidated;
- Edit: it allows you to remove or modify the selected symbol throught [Edit Underlying](#);
- Enable/Disable: it enable or disable the selected symbol in the strategy, therefore the property of the strategy and the Payoff will change;
- Paper Trading: see the details of functions outlined further down on this page;

- Real Market: see the details of functions outlined further down on this page;
- Quick Alert: see the details of functions outlined further down on this page;
- Open Historical Chart: it allows to open the historical chart of the instrument in beeTrader (This function is only available for Index, Future and Stock);
- Choose Properties: it open the window "Choose Properties" to choose properties to visualize, in Chapter below the list of properties available;



- Paper Trading → Buy/Sell: it open the order window for the execution in [Paper Trading](#);
- Paper Trading → Flat Position: it close the position [Paper Trading](#) at market price;

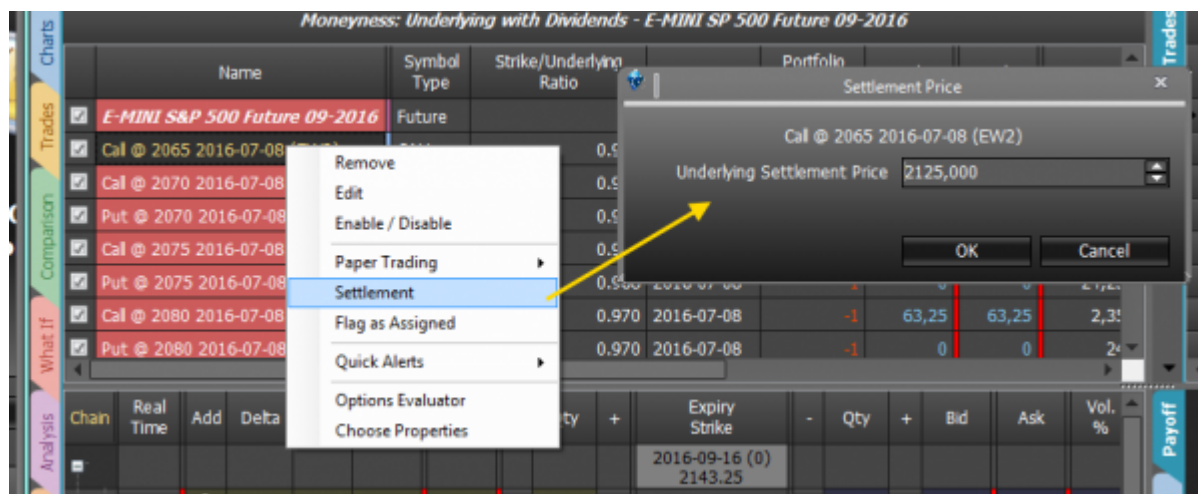


- Real Market → Open DOM: it open the book for the execution in Real Market. For an eventual modification is available the [Order Manager](#)



- Quick Alert → Add Quick Alert: it allows you to insert an Alert to a specific value of any symbol, the Alerts can be applied on Bid, Ask, Last, Profit/Loss, Volatility, Delta, Gamma, Theta, Vega, Rho, Time Value;
- Quick Alert → Show Quick Alert List: it shows the summary screen of active Quick Alert in the strategy;

## Settlement



On option's expiry corresponding cell will be highlighted in red, with a right click its possible to access the menu comprising Settlement command. Once clicked a new window will appear providing a field to enter the underlying settlement price.

Iceberg will automatically flat the option position with profit/loss calculated on settlement price.

For a list of available Properties and their explanation, click [here](#).

From:

[http://manuals.playoptions.it/Iceberg\\_old/](http://manuals.playoptions.it/Iceberg_old/) - **Iceberg Options Solutions**

Permanent link:

[http://manuals.playoptions.it/Iceberg\\_old/en/legs?rev=1491815386](http://manuals.playoptions.it/Iceberg_old/en/legs?rev=1491815386)



Last update: **2017/04/10 11:09**