

## Creating a Strategy

Let us now see how to proceed to the realization of a Strategy analyzing all the steps to proceed correctly.

### Video Strategy

	24.03.2016	<a href="#">Strategy - How to build a strategy in options</a>	6: 23
	24.03.2016	<a href="#">Strategy - How to import on Iceberg an existing strategy</a>	5: 59
	24.03.2016	<a href="#">Strategy - How to change filled price of a strategy</a>	2: 22
	20.04.2016	<a href="#">Strategy - How to import positions of the broker</a>	2: 51
	22.04.2016	<a href="#">Strategy - From setting of the strategy to Plan B</a>	18: 45
	20.04.2016	<a href="#">Strategy - Management of Dividends</a>	5: 40

Click [here](#) to see other **Iceberg Video**

### 1. Start Iceberg

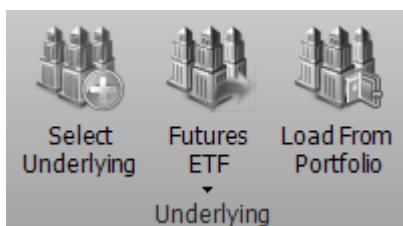
Once verified that the options and futures are properly encoded, you switch to start Iceberg, an app of beeTrader®. It is possible to start Iceberg by the menu [beeApps](#) and the Welcome page of beeTrader® both. If you can't click the button check the authorizations on [area user](#) of PlayOptions.it site.

### 2. Click New Strategy

### 3. Select Underlying

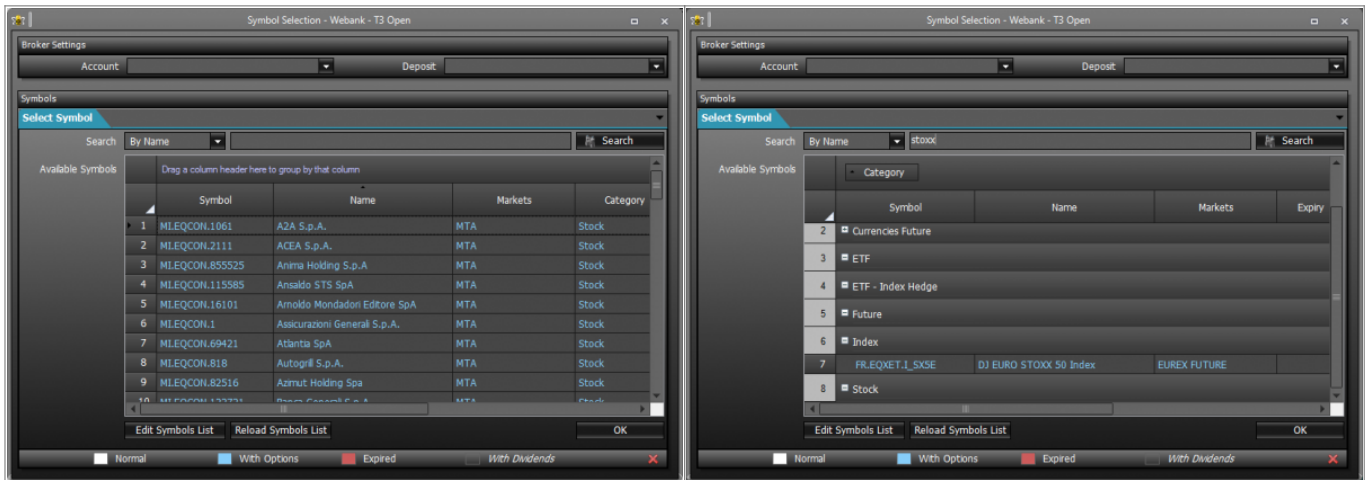
In "General" you can see a large part of the necessary information.

The first thing to do is to choose the underlying on which you want to build your strategy, then in Underlying of Strategy menu, click Select Underlying



Subsequently it is shown a window to select the underlying in which appear only the securities linked

to the options, so if the underlying does not appear in the list you have to connect the Chain Options to it, see [Symbol Manager](#) for the procedure. To facilitate the search of the underlying in this window there is a filtering system for each column. In the example the underlying assets are grouped by exchange simply dragging the column header of Markets on the line above.



#### 4. Wait Download Options Chains

Once you have chosen the underlying you will see it in the area where you will see all legs of the strategy.

Drag a column header here to group by that column

	Name	Symbol Type	Strike	Expiry	Qty	Bid	Ask	Last	Avg. Price	Implied Vol. %	Delta	At Now	Realized
<input checked="" type="checkbox"/>	DJ EURO STOXX 50 Index	Index			0			3111.46			1.000	\$0.00	\$0.00

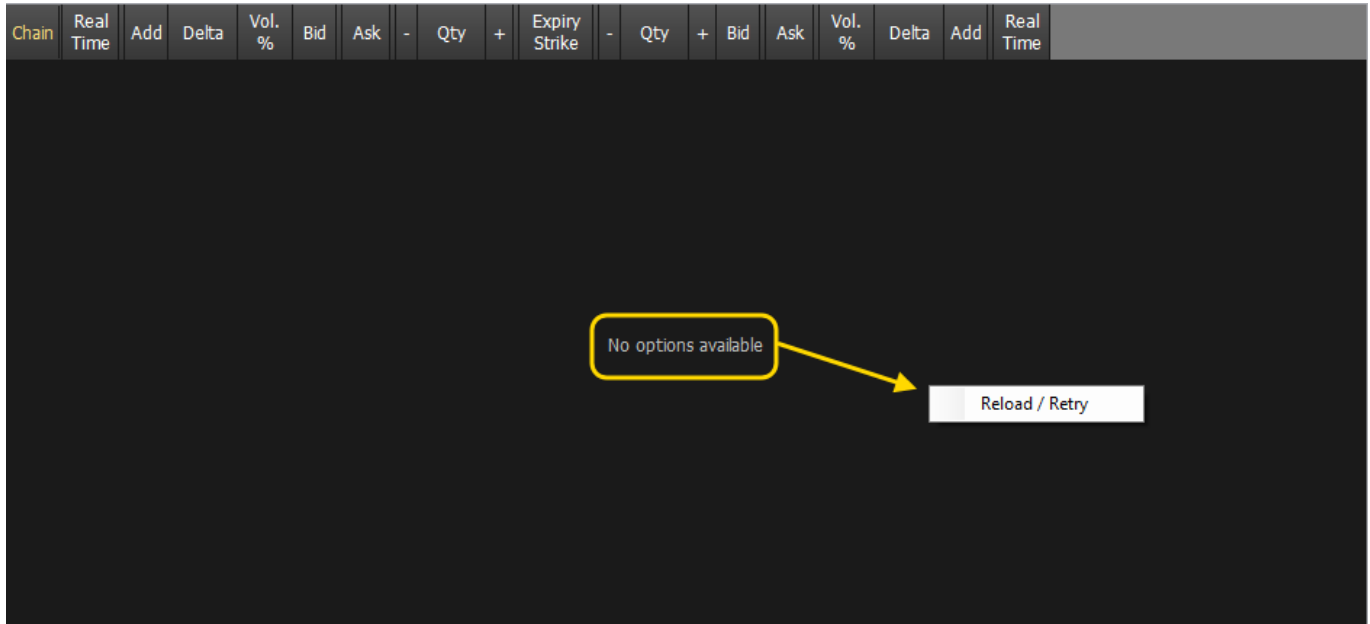
Iceberg, when the underlying is selected, automatically proceeds to download of [Chain Options](#), as you can see from the pictures below.

Chan	Real Time	Add	Delta	Vol. %	Bid	Ask	Qty	Expiry	Bid	Ask	Vol. %	Delta	Add	Real Time	
								2015-09-25 (2)							
Start	+	0.86	29.7	111.7	120.1	0	+	3000	0	+	6.1	6.9	38.5	-0.13	Start
Start	+	0.8	29.1	91.7	98	0	+	3025	0	+	9.1	10.1	36.9	-0.18	Start
Start	+	0.74	27.5	71.7	77.4	0	+	3050	0	+	13.3	14.6	25.2	-0.25	Start
Start	+	0.65	25.9	54.2	58	0	+	3075	0	+	19.5	21	23.7	-0.34	Start
Start	+	0.54	24.5	38.5	41.5	0	+	3100	0	+	28.1	29.7	32.2	-0.45	Start
Start	+	0.43	22.8	25.5	27.2	0	+	3125	0	+	38.1	42	30.3	-0.58	Start
Start	+	0.31	21.5	15.5	16.6	0	+	3150	0	+	51.6	57	28.1	-0.71	Start
Start	+	0.21	20.4	8.5	9.4	0	+	3175	0	+	68.2	75.1	25.2	-0.84	Start
Start	+	0.12	29.6	4.1	5	0	+	3200	0	+	87.6	96	18.5	-0.97	Start
								2015-10-02 (9)							
								2015-10-09 (16)							
								2015-10-16 (23)							

Please wait while downloading options chain

## 4.B Failure download Option Chain - No options available

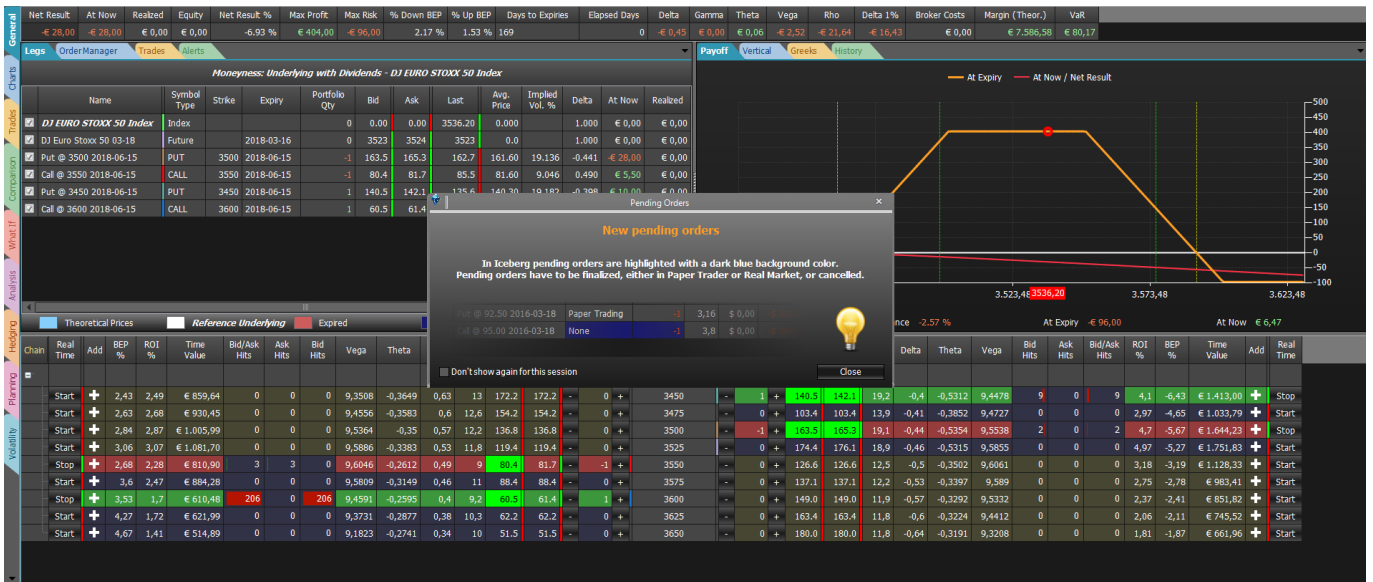
Can take place, due to momentary connection problems to the broker's platform, the Chain Options is not downloaded. In this case Iceberg shows the message "No options available" message. You need click the right mouse button in option chain section and select Reload / Retry. It will then be made a new attempt to download the Options Chain from the broker.



## 5. Study Strategy

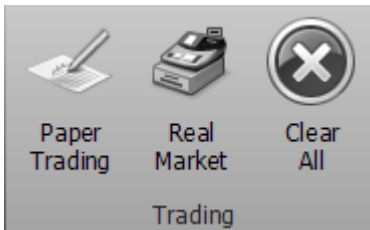
Well, now with the underlying and [Chain Options](#) we have to study the strategy to implement. Through the menu that appears with the right mouse button you can choose the strike and expires. To deepen the Chain Options functions, click [here](#).

Let's say you want to make a condor, then you sell a put a call 3050 3150 and buy the put and call 3000 3200. Adding or removing options contracts in [Chain Options](#) the [payoff](#) changes accordingly. The operations are highlighted in blue in the [Trades](#) and in [Legs](#), this indicates that the operations are still to be finalized in basketball. In [Payoff](#) the Breakeven Points are shown in red color. The standard deviation are shown in green color. This is a default configuration that the user can change at will, for more information on the functions of the [Payoff](#) Click [here](#). All properties of the options readed in [Legs](#) and Trades are editable, for more information on the [Legs](#) Click [here](#), and for more information on the [Trades](#) click [here](#).

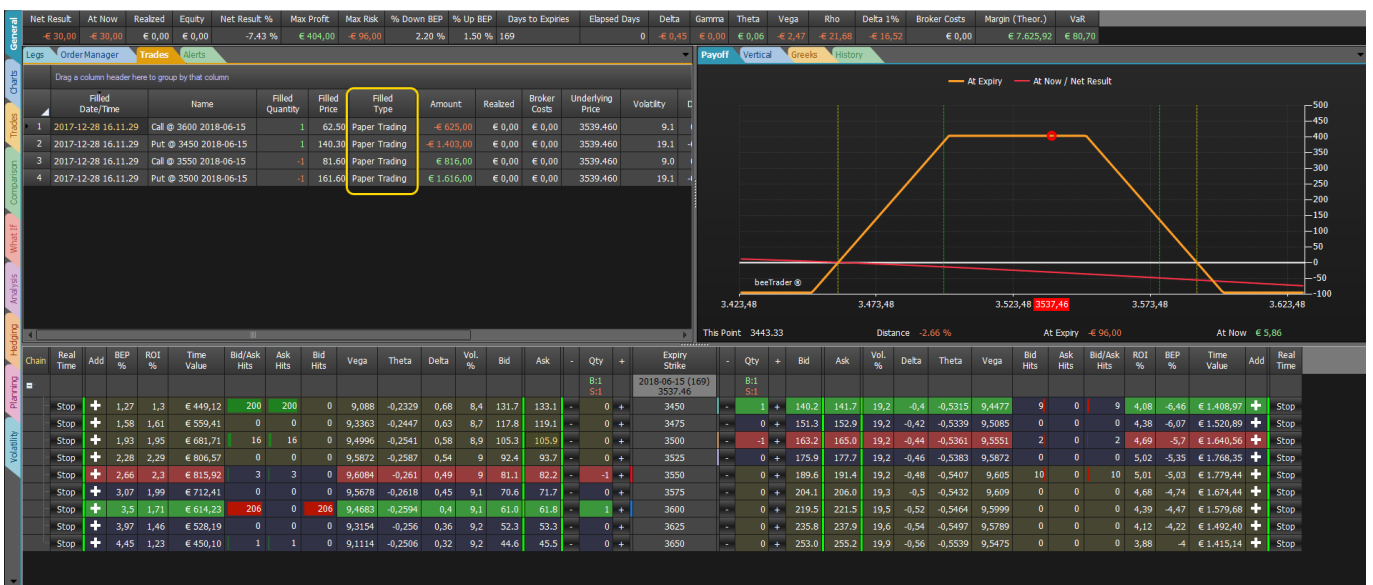


==== 6. Focus ==== Market

The finalization of the strategy, in [Paper Trading](#) or [Real Market](#), through the appropriate buttons on the menu of Trading Strategy section. It is recommended to read the section of the manual about orders execution in [Paper Trading](#) or [Real Market](#) available [here](#).



When the orders are filled you can see the type of orders (paper or real in [Trades](#)).



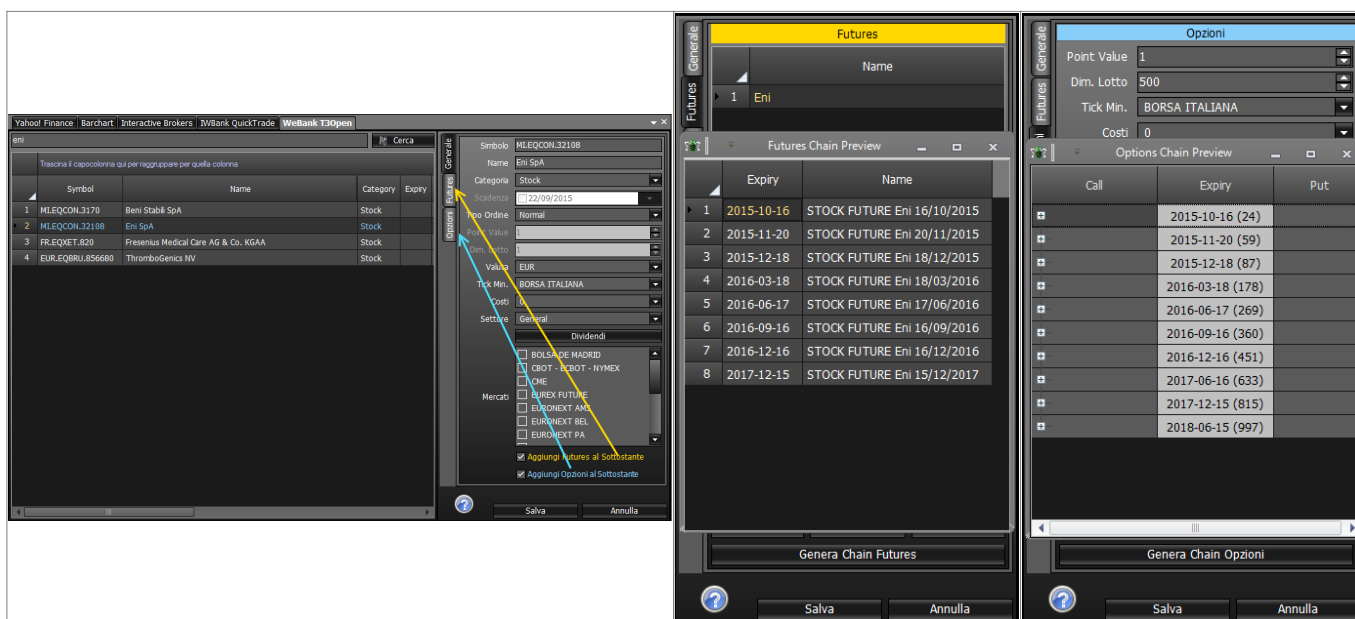
It is recommended to read the section of the manual about order execution in [Paper Trading](#) or [Real Market](#) available [here](#).

## Check the options from Symbol Manager

If underlying desired is not available it must be coded in [Symbol Manager](#) with his options and futures.

Suppose as an example to create a strategy on Eni through WeBank.

Opening the Symbol Manager and Eni we can see that the check boxes “Add to the Underlying Futures” and “Add to Underlying Options” are already flagged, this means that the underlying Eni is configured. By clicking on the buttons “Generate Chain Futures” and “Chain Generate Options” in the corresponding tab you can verify that the settings are correct, indeed the chain request is made to the broker platform which must be open.



if this does not happen, and the underlying has options listed on the broker you should be able to encode it. On beeTrader® manual there is the procedure to encode symbols for each broker: [Yahoo! Finance](#), [Interactive Brokers - TWS](#), [Iw Bank - Quick Trade & PEI](#), [Webank - T3 Open 8.0](#) .

From: [http://manuals.playoptions.it/Iceberg\\_old/](http://manuals.playoptions.it/Iceberg_old/) - **Iceberg Options Solutions**

Permanent link: [http://manuals.playoptions.it/Iceberg\\_old/en/how\\_to\\_create\\_a\\_strategy?rev=1470490182](http://manuals.playoptions.it/Iceberg_old/en/how_to_create_a_strategy?rev=1470490182)

Last update: **2016/08/25 15:05**